

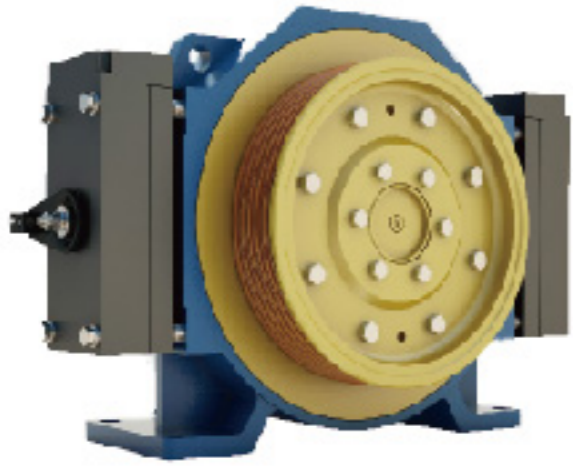


SHANGHAI SUNNY ELEVATOR CO.,LTD

A detailed photograph of an elevator traction machine, showing a large metal wheel with a thick steel cable wrapped around it. The machine is set against a background of white, stylized gear-like shapes. The text "ELEVATOR TRACTION MACHINE" is overlaid on the bottom right of the image.

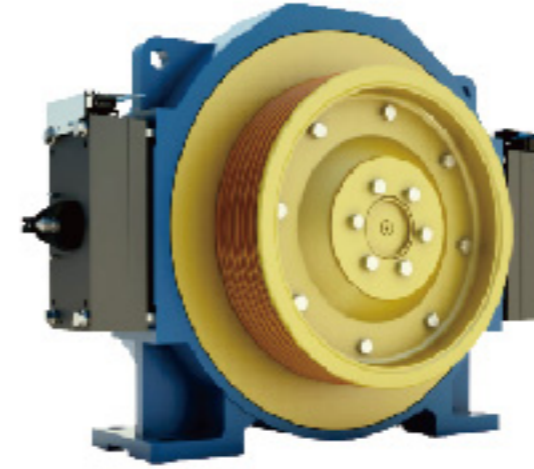
ELEVATOR TRACTION MACHINE

■ **MONADRIVE** SERIES



SN-MCK100

Elv.Load:320-630kg
Elv.Speed:0.5-1.75m/s
Sheave Diam:320mm
Weight:200kg
Roping:2:1
Max. Static Load:2500kg
Brake:DC110V 2x1.2A



SN-MCK200

Elv.Load:630-1150kg
Elv.Speed:0.5-2.5m/s
Sheave Diam:400/450mm
Weight:330kg
Roping:2:1
Max. Static Load:4000kg
Brake:DC110V 2x1.2A



SN-MCK300

Elv.Load:1250-1600kg
Elv.Speed:0.5-2.5m/s
Sheave Diam:400/480mm
Weight:480kg
Roping:2:1
Max. Static Load:6000kg
Brake:DC110V 2x1.6A



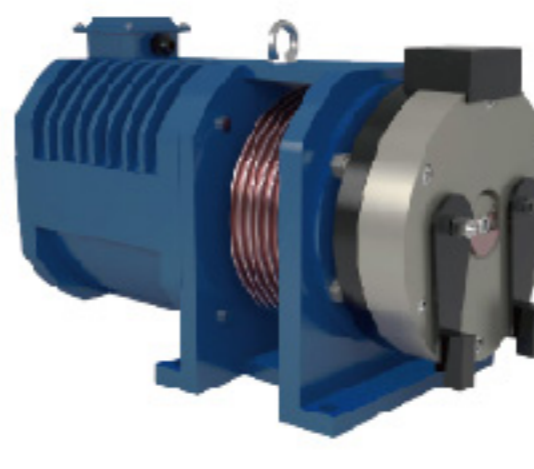
SN-MCK500

Elv.Load:1600-2000kg
Elv.Speed:0.5-2.5m/s
Sheave Diam:480mm
Weight:690kg
Roping:2:1
Max. Static Load:10000kg
Brake:DC110V 2x1.2A



SN-MONA200

Elv.Load:320-630kg
Elv.Speed:0.4-1.5m/s
Sheave Diam:200/240/320mm
Weight:110/150kg
Roping:2:1/1:1
Max. Static Load:2500kg
Brake:DC110V 2.6A



SN-MONA200A

Elv.Load:320-450kg
Elv.Speed:0.4m/s
Sheave Diam:200/240mm
Weight:110/150kg
Roping:2:1/1:1
Max. Static Load:2500kg
Brake:DC110V 2.6A



SN-MONA320

Elv.Load:630-1150kg
Elv.Speed:0.5-1.75m/s
Sheave Diam:320mm
Weight:300kg
Roping:2:1
Max. Static Load:3500kg
Brake:DC110V 2.6A



SN-MONA320A

Elv.Load:320-450kg
Elv.Speed:0.5-1.0m/s
Sheave Diam:320mm
Weight:150kg
Roping:2:1
Max. Static Load:2500kg
Brake:DC110V 2.2A



SN-MONA320B

Elv.Load:630-1000kg
Elv.Speed:0.5-1.75m/s
Sheave Diam:320mm
Weight:260kg
Roping:2:1
Max. Static Load:3000kg
Brake:DC110V 2.4A



SN-MONA400

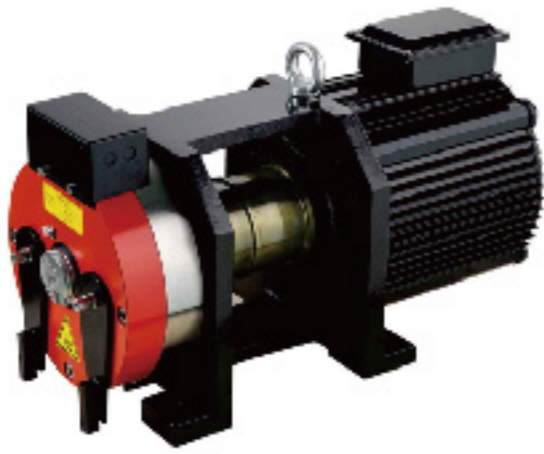
Elv.Load:800-1600kg
Elv.Speed:0.5-2.5m/s
Sheave Diam:400mm
Weight:530kg
Roping:2:1
Max. Static Load:5500kg
Brake:DC110V 2x1.8A



SN-MONA450

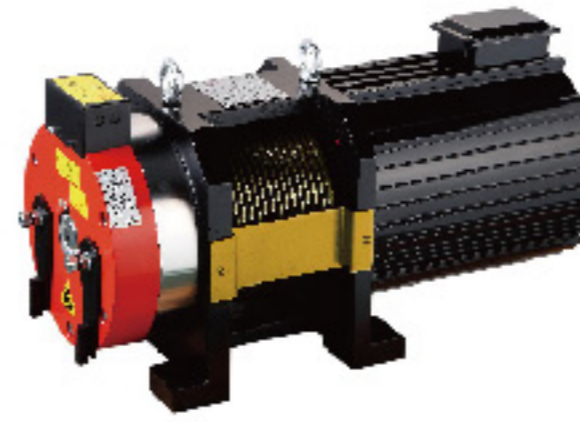
Elv.Load:1350-2500kg
Elv.Speed:0.5-3.0m/s
Sheave Diam:450/480mm
Weight:650kg
Roping:2:1
Max. Static Load:10000kg
Brake:DC110V 2x2.3A

■ **FAXI** SERIES



SN-FX100

Elv.Load:320-2000kg
Elv.Speed:0.4-1.0m/s
Sheave Diam:100mm
Roping:2:1
Static Load:3000/5000kg
Voltage:220V、380V
Poles:16



SN-FXBS180

Elv.Load:800-1350kg
Elv.Speed:1.0-1.6m/s
Sheave Diam:240mm
Roping:2:1
Static Load:4000kg
Voltage:380V
Poles:16



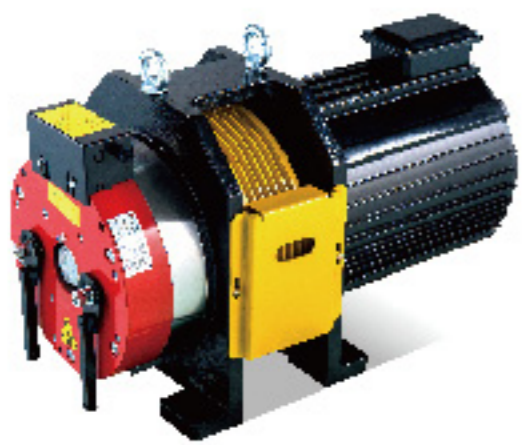
SN-FX200-XB

Elv.Load:320-450kg
Elv.Speed:0.4-1.0m/s
Sheave Diam:200mm
Roping:2:1
Static Load:3000kg
Voltage:220V、380V
Poles:16



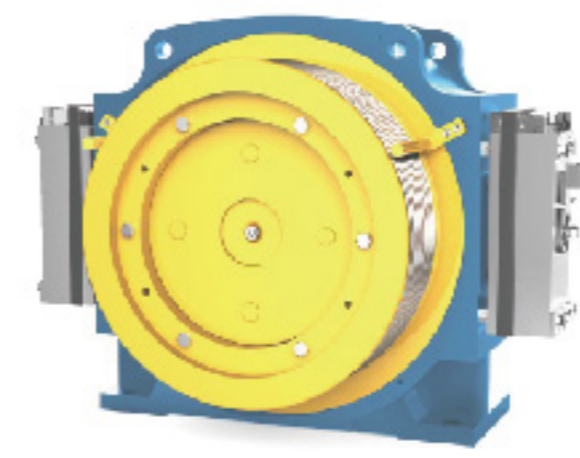
SN-FX230-XB

Elv.Load:320-450kg
Elv.Speed:0.4-1.0m/s
Sheave Diam:230mm
Roping:2:1
Static Load:3000kg
Voltage:220V、380V
Poles:16



SN-FX320

Elv.Load:320-2000kg
Elv.Speed:0.4-1.75m/s
Sheave Diam:320mm
Roping:2:1
Static Load:5000kg
Voltage:220V、380V
Poles:16/24



SN-FXW3

Elv.Load:450-630kg
Elv.Speed:1.0-1.75m/s
Sheave Diam:400mm
Roping:2:1
Static Load:2000kg
Voltage:380V
Poles:32

■ **KDS** SERIES



SN-WJC

Elv.Load:320-1250kg
Elv.Speed:1.0-2.5m/s
Sheave Diam:330、400mm
Weight:220/260/320/340/370kg
Roping:2:1
Shaft Load:1500-3500kg
Brake:DC110V



SN-WR-H

Elv.Load:450-1000kg
Elv.Speed:1.0-1.75m/s
Sheave Diam:320mm
Weight:200/230/270/280kg
Roping:2:1
Shaft Load:1500-2500kg
Brake:DC110V



SN-WTY1

Elv.Load:320-1600kg|320-800kg
Elv.Speed:1.0-2.5m/s
Sheave Diam:330、400mm
Weight:220/260/320/340/370kg
Roping:2:1/1:1
Shaft Load:900-3000kg
Brake:DC110V

■ **TORINDRIVE** SERIES



SN-GTW3

Elv.Load:1150-1350kg
Elv.Speed:1.0-1.75m/s
Sheave Diam:400mm
Roping:2:1
Static Load:4000kg
Voltage:380V
Brake:DC110V 2*0.89A



SN-GTW5A

Elv.Load:1350-2000kg
Elv.Speed:1.0-2.0m/s
Sheave Diam:485mm
Roping:2:1
Static Load:6000kg
Voltage:380V
Brake:DC110V 2*1.1A



SN-GTW7A

Elv.Load:320-630kg
Elv.Speed:0.63-1.75m/s
Sheave Diam:325mm
Roping:2:1
Static Load:2000kg
Voltage:380V
Brake:DC110V 2*0.84A(2x1.1A)



SN-GTW9S

Elv.Load:630-1150kg
Elv.Speed:1.0-2.0m/s
Sheave Diam:400/340mm
Roping:2:1
Static Load:3000kg
Voltage:380V
Brake:DC110V 2*0.88A

■ **XIZI** SERIES



SN-GETM1.9D

Elv.Load:400kg
Elv.Speed:0.4m/s
Sheave Diam:200mm
Roping:2:1
Max.axle load:1900kg
Voltage:220V
Motor weight:164kg



SN-GETM3.0H(630kg)

Elv.Load:630kg
Elv.Speed:1.0-1.75m/s
Sheave Diam:400mm
Roping:2:1
Max.axle load:2000kg
Voltage:340V
Motor weight:308kg



SN-GETM3.0H(800~1000kg)

Elv.Load:800-1000kg
Elv.Speed:1.0-1.75m/s
Sheave Diam:400mm
Roping:2:1
Max.axle load:3000kg
Voltage:340V
Motor weight:373kg



SN-GETM6.0H

Elv.Load:1250-1600kg
Elv.Speed:0.5-3.0m/s
Sheave Diam:450/550mm
Roping:2:1
Max.axle load:6000kg
Voltage:340V
Motor weight:740、810-860kg

■  SERIES
WITTUR



SN-WSG09

Elv.Load:630-1050kg; 800-1150kg
Elv.Speed:1.0-2.0m/s; 1.0-2.5m/s
Sheave Diam:400/450mm
Weight:330-390kg
Roping:2:1
Rate Current:2x1.22A; 2x1.53A
Shaft Load:30kN; 35kN



SN-WSG-S1.3

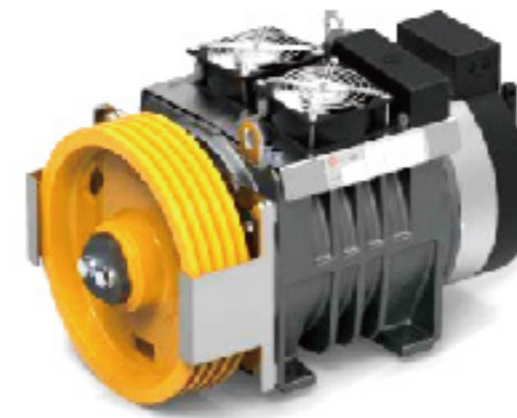
Elv.Load:480-750kg
Elv.Speed:0.5-1.75m/s
Sheave Diam:240mm
Weight:141-150kg
Roping:2:1
Rate Current:2x1.25A
Shaft Load:20kN

■  SERIES



SN-MTD96

Elv.Load:630-1000kg
Elv.Speed:0.5-2.0m/s
Sheave Diam:400mm
Weight:320kg
Roping:2:1
Static Load:3000kg
Brake:DC110V/2*1.4A



SN-MDX26M

Elv.Load:630-800kg
Elv.Speed:0.5-1.75m/s
Sheave Diam:240-320mm
Weight:180kg
Roping:2:1
Static Load:3400kg
Brake:DC110V/2.1A

■  SERIES



SN-WTD1-B320/450

Elv.Load:320-450kg
Elv.Speed:0.5-1.75m/s
Sheave Diam:320mm
Weight:150kg
Roping:2:1
Max. Static Load:2000kg
Brake:DC110V



SN-WTD2-P250/450

Elv.Load:250-450kg
Elv.Speed:0.4-0.5m/s
Sheave Diam:200mm
Weight:130kg
Roping:2:1
Max. Static Load:1500kg
Brake:DC110V

■  SERIES



SN-KGT-T

Elv.Load:450-1050kg
Elv.Speed:0.5-2.0m/s
Sheave Diam:400/480mm
Weight:300/360kg
Roping:2:1
Max. Static Load:2500-3500kg
Voltage:AC380V



SN-KGT-TS

Elv.Load:800-1150kg
Elv.Speed:1.0-2.5m/s
Sheave Diam:400/480mm
Weight:390kg
Roping:2:1
Max. Static Load:3500kg
Voltage:AC380V



SN-KGT-H

Elv.Load:1600kg
Elv.Speed:5.0m/s,6.0m/s,7.0m/s
Sheave Diam:710mm
Weight:3500kg
Roping:1:1
Max. Static Load:35000kg
Voltage:AC380V



SN-KGT-U

Elv.Load:1350-2000kg
Elv.Speed:1.0-2.5m/s
Sheave Diam:480mm
Weight:800kg
Roping:2:1
Max. Static Load:7000kg
Voltage:AC380V

■ **常顺**®
CHANGSHUN SERIES



SN-TMYJ135

Elv.Load:400-630kg
Elv.Speed:0.63-1.0m/s
Sheave Diam:480/520mm
Weight:210kg
Roping:1:1
Max. Static Load:5200kg
Brake:DC110V 1.1A



SN-TMYJ150K

Elv.Load:500-630kg
Elv.Speed:0.3-1.0m/s
Sheave Diam:385/485mm
Weight:360kg
Roping:1:1
Max. Static Load:4330kg
Brake:DC110V 1.1A



SN-TMYJ210

Elv.Load:1000-2000kg
Elv.Speed:0.25-1.0m/s
Sheave Diam:586mm
Weight:550kg
Roping:2:1/1:1
Max. Static Load:9000kg
Brake:DC110V 1.1A



SN-TMYJ210F

Elv.Load:630-2000kg
Elv.Speed:0.5-1.0m/s
Sheave Diam:550mm
Weight:600kg
Roping:2:1/1:1
Max. Static Load:5900kg
Brake:DC110V 1.1A



SN-TMYJ300

Elv.Load:2500-8000kg
Elv.Speed:0.25-1.0m/s
Sheave Diam:725mm
Weight:1200kg
Roping:2:1/1:1
Max. Static Load:14730kg
Brake:DC110V 1.1A



SN-TMYJ350

Elv.Load:2000-28000kg
Elv.Speed:0.25-2.0m/s
Sheave Diam:800mm
Weight:2300kg
Roping:1:1/2:1/4:1/8:1
Max. Static Load:37900kg
Brake:DC110V 1.2A